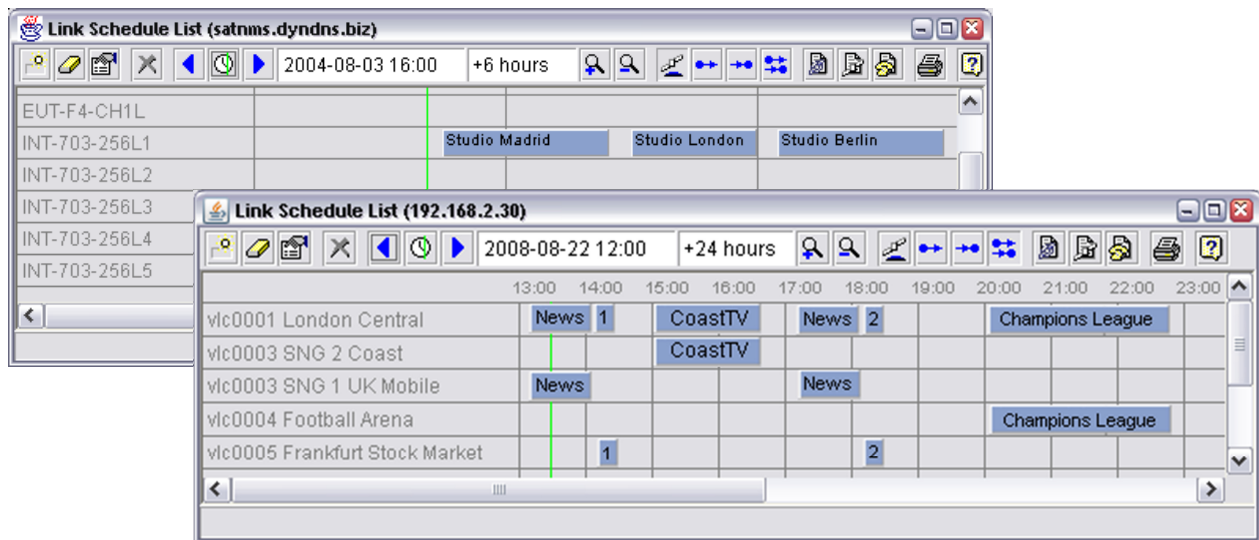


sat-nms LM - Link Management Module

The **sat-nms** NMS System is used in small and medium-sized VSAT networks or satellite ground stations to monitor and control a number of remote satellite ground stations or VSAT's from a central site. The **Satellite Link Management sat-nms** LM is an optional software module enabling the operator to set up satellite links easily, either by operator interaction or automatically time scheduled, controlled by the central **sat-nms** NMS and corresponding remote VSAT local controllers (**sat-nms** VLC). The **sat-nms** VLC's monitor and control the remote satellite ground terminal. The software module also manages the available satellite channels and performs an automatic channel assignment. The main features of the satellite link management are:

- Supports bi-directional satellite links occupying two satellite channels (modem data link applications)
- Supports one-way (A → B) transmissions and broadcasts (A → B, C, D...) as well (any distribution application)
- Built-in resource control: keeps track of the usage of satellite channels and earth station equipment. Impedes the operator from using the same satellite resource twice at the same time.
- Links / transmissions may be scheduled or started immediately on demand. Links may be scheduled to be active periodically (e.g. once a day).
- Automatic satellite channel assignment from customer defined channel pools.
- Supports multiple user groups with access to different satellite ground station equipment. Groups can share satellite capacity provided by a single NMS.



Key Features

- Support for unidirectional and broadcast Links
- Support for bidirectional Links
- Link Scheduling and automatic Channel Assignment
- User-friendly graphical Interface with Drag&Drop Link Configuration
- Central Resource Control / Resource Tracking
- Distributed Scheduling for high Reliability
- "One Click" Link Monitoring with CSM Module
- Link Down Time Statistics for Static Links
- Multi-tenant / multi-client capable

Contact Information

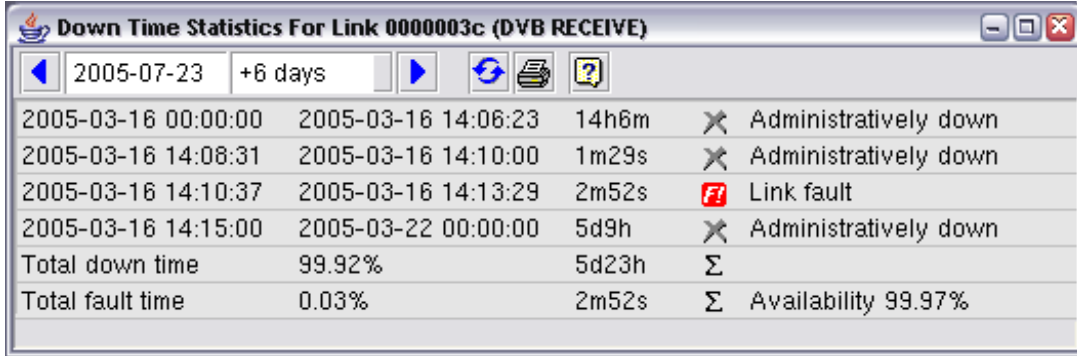
SatService
Gesellschaft für Kommunikationssysteme mbH

Hardstraße 9,
D-78256 Steisslingen, Germany

Phone +49 7738 99791 10
Fax +49 7738 99791 99
E-Mail sales@satservicegmbh.de

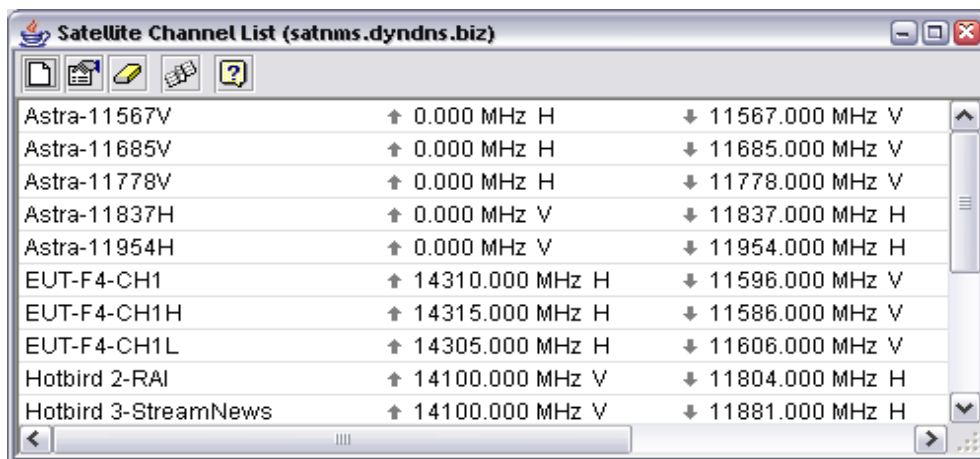
www.satnms.com
www.satservicegmbh.de

sat-nms LM User Interface



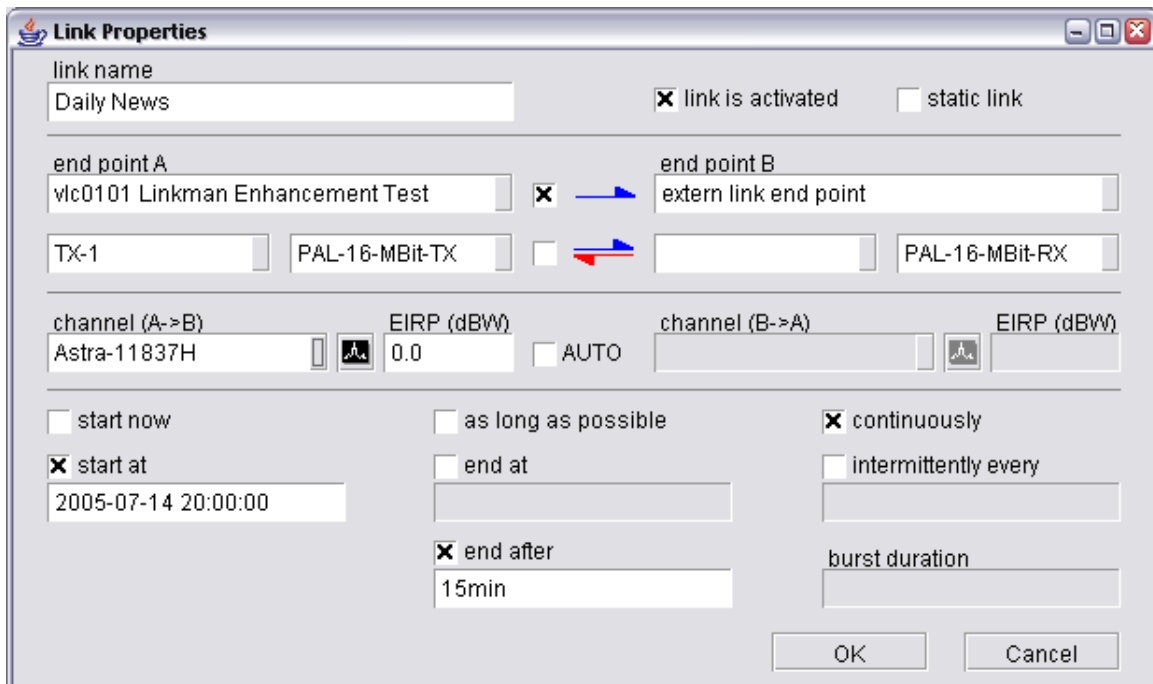
Down Time Statistics For Link 000003c (DVB RECEIVE)				
2005-07-23		+6 days		
2005-03-16 00:00:00	2005-03-16 14:06:23	14h6m	✘	Administratively down
2005-03-16 14:08:31	2005-03-16 14:10:00	1m29s	✘	Administratively down
2005-03-16 14:10:37	2005-03-16 14:13:29	2m52s	🔴	Link fault
2005-03-16 14:15:00	2005-03-22 00:00:00	5d9h	✘	Administratively down
Total down time	99.92%	5d23h	Σ	
Total fault time	0.03%	2m52s	Σ	Availability 99.97%

Down Time Statistic View



Satellite Channel List (satnms.dyndns.biz)	↑	↓
Astra-11567V	0.000 MHz H	11567.000 MHz V
Astra-11685V	0.000 MHz H	11685.000 MHz V
Astra-11778V	0.000 MHz H	11778.000 MHz V
Astra-11837H	0.000 MHz V	11837.000 MHz H
Astra-11954H	0.000 MHz V	11954.000 MHz H
EUT-F4-CH1	14310.000 MHz H	11596.000 MHz V
EUT-F4-CH1H	14315.000 MHz H	11586.000 MHz V
EUT-F4-CH1L	14305.000 MHz H	11606.000 MHz V
Hotbird 2-RAI	14100.000 MHz V	11804.000 MHz H
Hotbird 3-StreamNews	14100.000 MHz V	11881.000 MHz H

Satellite Channel List



Link Properties

link name: Daily News link is activated static link

end point A: vlc0101 Linkman Enhancement Test → end point B: extern link end point

TX-1 PAL-16-MBit-TX ← PAL-16-MBit-RX

channel (A->B): Astra-11837H EIRP (dBW): 0.0 AUTO channel (B->A): EIRP (dBW):

start now as long as possible continuously

start at: 2005-07-14 20:00:00 end at:

end after: 15min intermittently every:

burst duration:

OK Cancel

Link Properties Definition Dialog