

sat-nms MX - L-Band Mini Matrix

The *sat-nms* MX L-Band MiniMatrix was specifically developed by SatService GmbH for satellite news gathering (SNG) applications either in transportable stations or small teleports, but also TX/RX-Chain routing or redundancy switching applications are feasible. With 8 L-Band input ports an SNG operator has not only capacity to connect the 4 LNCs of a fully equipped SNG terminal but also to route the inputs of additional transmit chain and modulator test loops and even of a second receive only antenna. On the output side the operator can route these input signals to 8 different IRDs, spectrum analyzers or other measurement equipment. Even though all this functionality is provided in only 1RU 19" chassis it is a fully non-blocking matrix, which allows to switch any input - via local and remote control - to any number of outputs. This provides the user with an unlimited routing and configuration capability.



sat-nms MX Front Panel View with Display and Keyboard

Via the operator-friendly direct front panel keypad interface the user can select directly the relevant output/input-port combination. This ergonomic approach is very helpful and important for the SNG operators daily business. In addition to this local control certainly all the remote control functionality via the integrated web-server, SNMP MIB and the RS232 interface are available as it is the case for all *sat-nms* products.

All input ports provide the DC voltage supply for LNB and LNB current monitoring with min./max. thresholds. As an additional feature on 4 of the input ports the operator can select the LNB DC supply voltage between 0V/13V/18V and 0/22kHz.



sat-nms MX Rear Panel with F 75Ohm and SMA 50Ohm Connectors

In standard configuration, all input connectors are SMA 50Ohm; output connectors are 2x SMA 50Ohm and 6x F 75Ohm. If you need connectors configured in a different way, do not hesitate to contact us. SatService is able to offer the corresponding adaptors and impedance transformers.

Applications

- Satellite News Gathering (SNG) Terminals
- Automatic Measurement Systems
- LNB Redundancy Switching
- Small Teleports with several Antennas
- TX-Chain Redundancy / Route-switching

Key Features

- Ergonomic Front Panel Display and Keypad
- 19" compact Design in 1 RU
- LNB DC Supply Voltage and current Monitoring
- Dual redundant Power Supplies
- SNMP Interface for Monitoring & Control
- TCP/IP and HTTP via embedded Web-server
- User-friendly web-browser Interface

Contact Information

SatService Gesellschaft für
Kommunikationssysteme mbH

Hardstrasse 9
D-78256 Steisslingen
Germany

Phone +49 7738 997 91 10
Fax +49 7738 997 91 99
E-Mail sales@satservicegmbh.de

www.satnms.com
www.satservicegmbh.de

Technical Specification

RF Specification

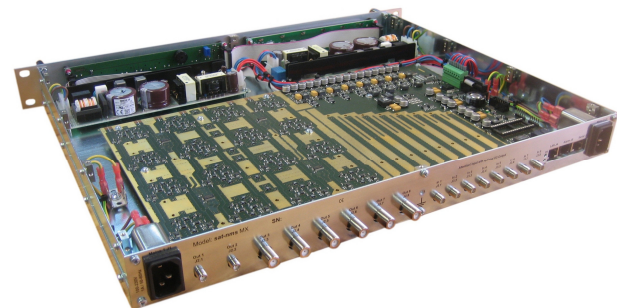
Frequency Range	950 to 2150MHz
L-Band Input Connectors	(8) SMA female 50Ohm
L-Band Output Connectors	(2) SMA 50Ohm and (6) F 75Ohm female
Input Return Loss	> 17dB
Output Return Loss	> 17dB @ 50Ohm, >15dB @ 75Ohm
Input Noise Figure	< 15dB
Gain	-3 / +2dB
Flatness	+/-1.5 dB, +/-0.25dB in any 40MHz
Gain Stability	+/-0.25dB/24h
OIP3	> +10 dBm
Intermodulation at -13dBm Input Level	< -40 dBc
Isolation	Out → In 50dB Out → Out 40dB

MNC Interface Specification

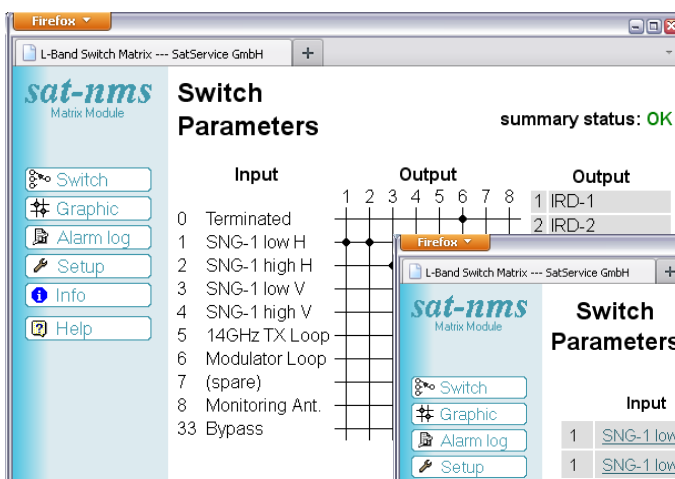
Local Control	Front Panel Keypad and LCD-Display
Ethernet Interface for <i>sat-nms</i> MNC and User Interface	10/100-Base-T, TCP/IP, HTTP and SNMP
Front Panel Display	Graphical LCD 2x40
RS232/485 MNC Interface	RJ45 female
Summary Fault Indication	Relay Contact RJ11 female

Electrical and Mechanical Specification, Environmental Conditions

Supply Voltage	100 to 230V AC, 1A / 50 to 60Hz (dual redundant)
Connector for the two Mains Voltage AC Inputs	IEC
LNB DC Supply Voltage via Input Ports	(4) 0V/13V/18V and 0/22kHz selectable (4) 15V fixed
Temperature Range	10 to +40°C
Location	Indoor Use only
Humidity	Up to 90% non-condensing
Mechanical Size	440 x 40,5 x 360 mm, 19" 1RU
Weight	6 kg



Open *sat-nms* MX Chassis



sat-nms MX Web Interface

